

KREBS & RIEDEL
HI-COMP CBN-Gear Grinding wheels

The fastest way to the finish



HI-COMP CBN-Gear Grinding Wheels

When continuous generative or profile grinding, a worm grinding wheel and workpiece rotate synchronously with one another whilst the workpiece is simultaneously moved past the worm grinding wheel with several traverses. The requirements on the kinematics of the machine are demanding. The method is economical for the mass production of small- and medium-sized modules.

The grinding wheel dimensions are specified by the grinding machine systems being used or by the particular task. Working speeds lie between 100 m/s. Depending on the composition, higher operating speeds may be achieved.

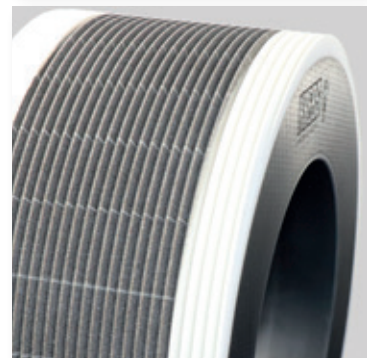
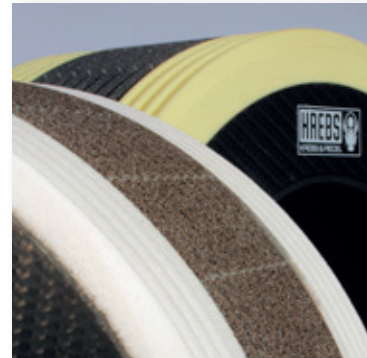
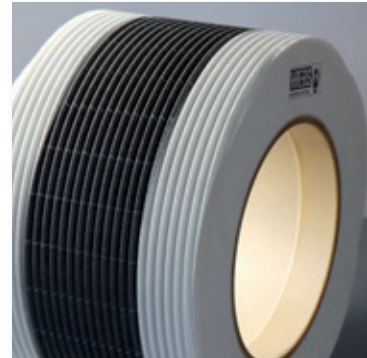
Our HI-COMP CBN wheels ensure low thermal impact on your work piece, high profile retention and cutting ability with high dressing cycles and high efficiency.

We offer optimized abrasives compositions for all machine types.

We will be happy to advise you.



KREBS & RIEDEL Schleifscheibenfabrik GmbH & Co. KG
D-Bremer Straße 44, 34385 Bad Karlshafen
Phone: +49 5672 184-0, Fax: +49 5672 184-218
mail@krebs-riedel.de, www.krebs-riedel.com



Advantages:

- Improved surface quality
- Increased part tolerances
- Reduced flaws
- Good grinding characteristics
- Improved performance of the grinding spindle
- Body can be recoated